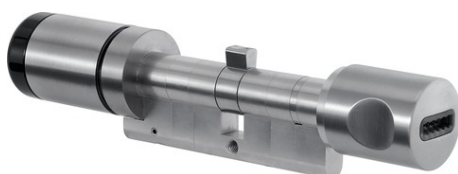


CodeLoxx Remote Protokoll Panik Security

Art.-Nr. CLX-LA-RP-10-P

Seite 1 von 2



This premium electronic CodeLoxx cylinder provides more security, control and convenience at your door. It is operated using the read-protected ABUS Seccor chip key. The cylinder can also be operated remotely, even using a different system, such as wall readers or time recording systems, for example, thanks to the remote function. The protocol and time function makes it possible to save events and allocate rights depending on the time of day or the day of the week. The unique modular extension system guarantees maximum flexibility during installation, use or structural changes.

Technologies

- Electronic double knob cylinder with chip key reader and logging function
- Suitable for external activation via wireless signal
- Ideal in combination with CodeLoxx in existing access control systems
- Optical signalling
- Permanent access; opening time can be set between 6 and 12 sec.
- Extremely tamper-proof cylinder thanks to ABUS Security drill protection
- Panic function: for locks that require a defined locking nose position

Technical data - CodeLoxx Remote Protokoll Panik Security

Annual profiles	6
Area of application	Panic locks compliant with DIN179, which require a defined locking nose position, doors with PZ mortise lock
Colour	Stainless steel
Combination code	No
DC voltage supply	3 V
Drill protection	Security
Electronics	Remote with logging function
Emergency power supply possible	Yes
Event memory	1000
Inner knob diameter	33 mm
Inner knob length	59 mm
Locking media	ABUS-Seccor key reader
Logging and time function	Yes
Material	Stainless steel knobs, plastic cap inside

CodeLoxx Remote Protokoll Panik Security



Art.-Nr. CLX-LA-RP-10-P

Seite 2 von 2

Technical data - CodeLoxx Remote Protokoll Panik Security

Max. number of locking media	511
Max. operating temperature indoors	60 °C
Max. operating temperature outdoors	60 °C
Min. operating temperature indoors	-10 °C
Min. operating temperature outdoors	-20 °C
Modularly extendible	Yes
Opening time can be set	between 6 and 12 seconds
Outer knob diameter	30 mm
Outer knob length	39 mm
Permanent access	Yes
Programming	Via programming key and/or PELT or SKM with TG-SKM
Protection class IP Indoor	55
Protection class IP Outdoor	55
Reader type	Chip key reader
Signalling	optical
Special design axle	For doors with PZ perforation
Standard length	Length measurement when ordering
Weekly profiles	30
ZAAP	No