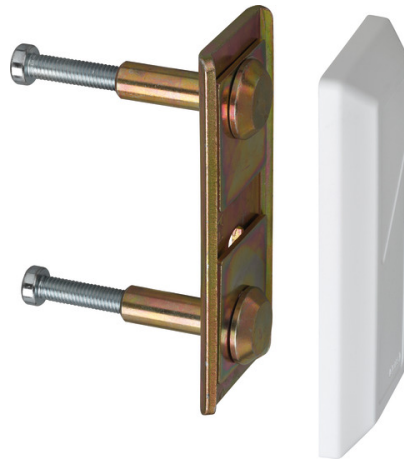


Security door bars-mounting set PV1820 white

Seite 1 von 2



STRONGLY MOUNTED

With this set, the assembly of locking bars succeeds even under difficult conditions.

A security door bar protects against burglars. However, it is not always possible to mount the lock casing strongly in the wall on the door frame. The PV1820 mounting set provides a remedy. The armour connection plate enables robust through-bolting of the lock casing to the frame, even with glazed elements next to the door or lightweight walls. The set is suitable for the PR1400, PR1500, PR2600, PR2700, PR2800 bars.

Technologies

- Hardened exterior parts

Operation and use

- Armoured plate to mount the staple complete with screws that go through the wall
- Suitable for fitting on doors, with glass panels next to the door
- Suitable for PR1400, PR1500, PR2600, PR2700, PR2800

Variants

- Colours: black, white

Security door bars-mounting set PV1820 white

Seite 2 von 2

Technical data - Security door bars-mounting set PV1820 white

Weight	394 g
colour	white
EAN	4003318106644