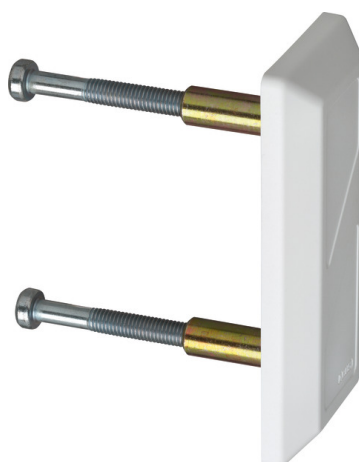


# Security door bars-mounting set PA1014 white

Seite 1 von 2



## DISCREET AND SAFE

With this set, you can securely and strongly attach ABUS security door bars to your doors.

You want to secure your outward opening doors with a security door bar? Then you need an attachment that is strongly anchored. The PA1018 mounting set is resistant, but also convinces with its appearance. The two anchors can be mounted on doors up to 120 millimetres thick as well as in the frame. The hardened outer parts with elegant plastic cover are available in black and white. Suitable bars are PR2600, PR2700 and PR2800.

## Technologies

- Screws go through the complete wall
- Hardened exterior plates with elegant vinyl cover

## Operation and use

- Armoured plate for outward opening doors
- Suitable for PR2600, PR2660, PR2700 und PR2800
- Solid anchoring of the door bar on the door by way of two armoured plates

## Tips

- You can order the PA1014 fixing set to match the PR1400 deadbolt.

## Variants

- Colours: Black, white

# Security door bars-mounting set PA1014 white

Seite 2 von 2

---

## Technical data - Security door bars-mounting set PA1014 white

Weight	1297 g
colour	white
EAN	4003318867507