



Security Tech Germany

**VITESS.2000**

**SIMPLY  
SECURE**

CONVENTIONAL SYSTEM

# SIMPLY SECURE

Vitess.2000



## HIGH SECURITY

The Vitess locking system features technical copy protection, patent protection and trademark protection to ensure it meets your high security requirements. The innovative Intop system and special profile design provide reliable protection against illegal key copies and access effectively. The door will only open if the Intop systems in the cylinder and key match. The security card provides additional protection as this must be presented before additional cylinders and keys can be ordered.

## TAILORED SOLUTION

The Vitess intelligent locking system is precisely tailored to suit your individual needs. ABUS offers a complete, sophisticated modular kit so you can design a security solution specific to your building, customised down to the cylinder type, colour and special features. The master key system is tailor-made to meet your individual requirements. You can even create individual locking authorisations for each user.

## "MADE IN GERMANY" QUALITY

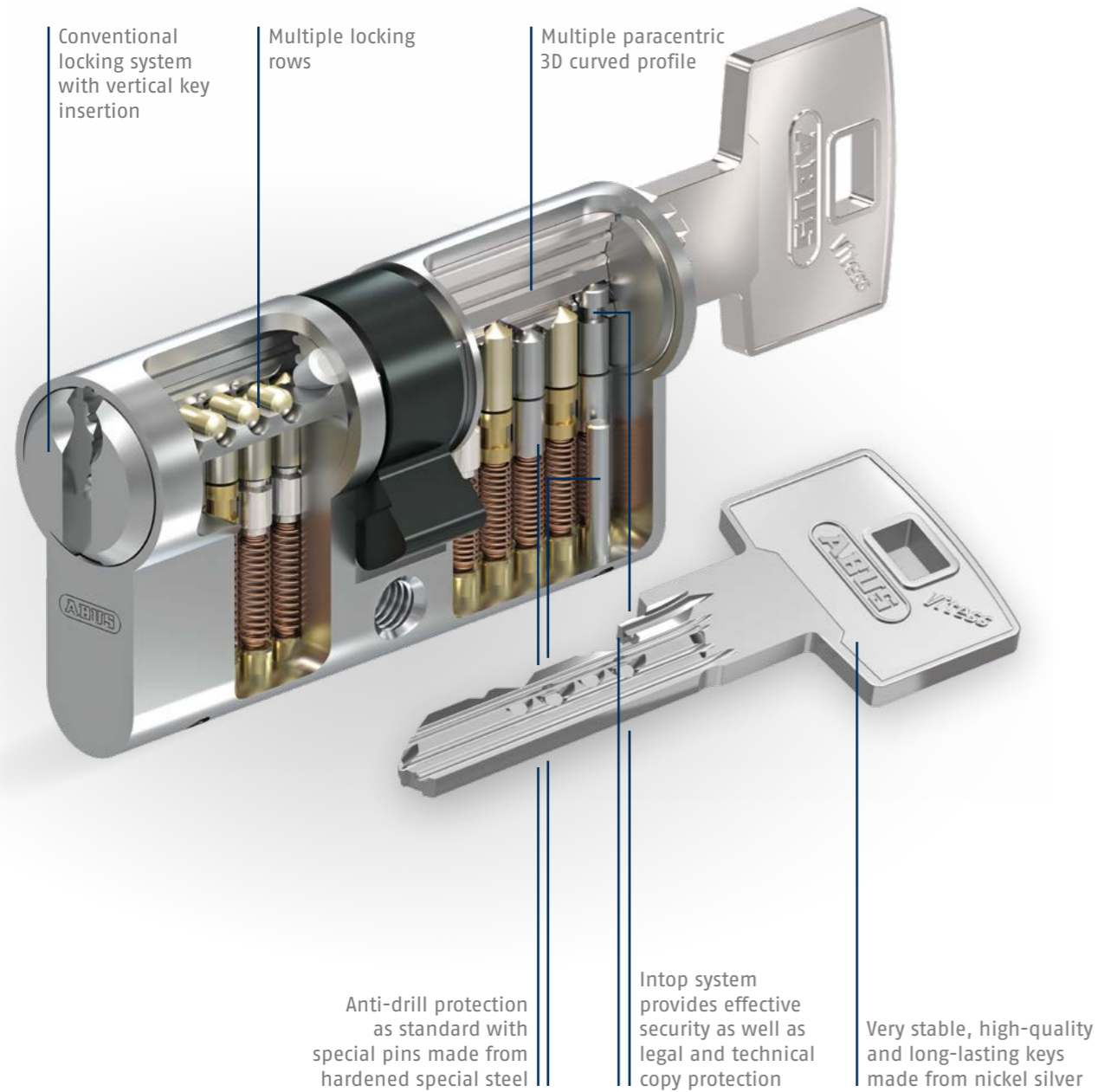
High-quality raw materials, high-precision manufacturing and ABUS' many years of experience in the cylinder industry mean that you can rest assured in the knowledge that your building is secure. The fact that the lock cylinders are developed and produced in Germany guarantees premium quality and a long service life.

## READY FOR THE FUTURE

The Vitess system can be expanded at any time, giving you maximum flexibility through developments and changes. We can deliver expansion products for your locking system many years after installation.

# VITESS.2000

In detail



The curved profile provides protection against intelligent opening methods.



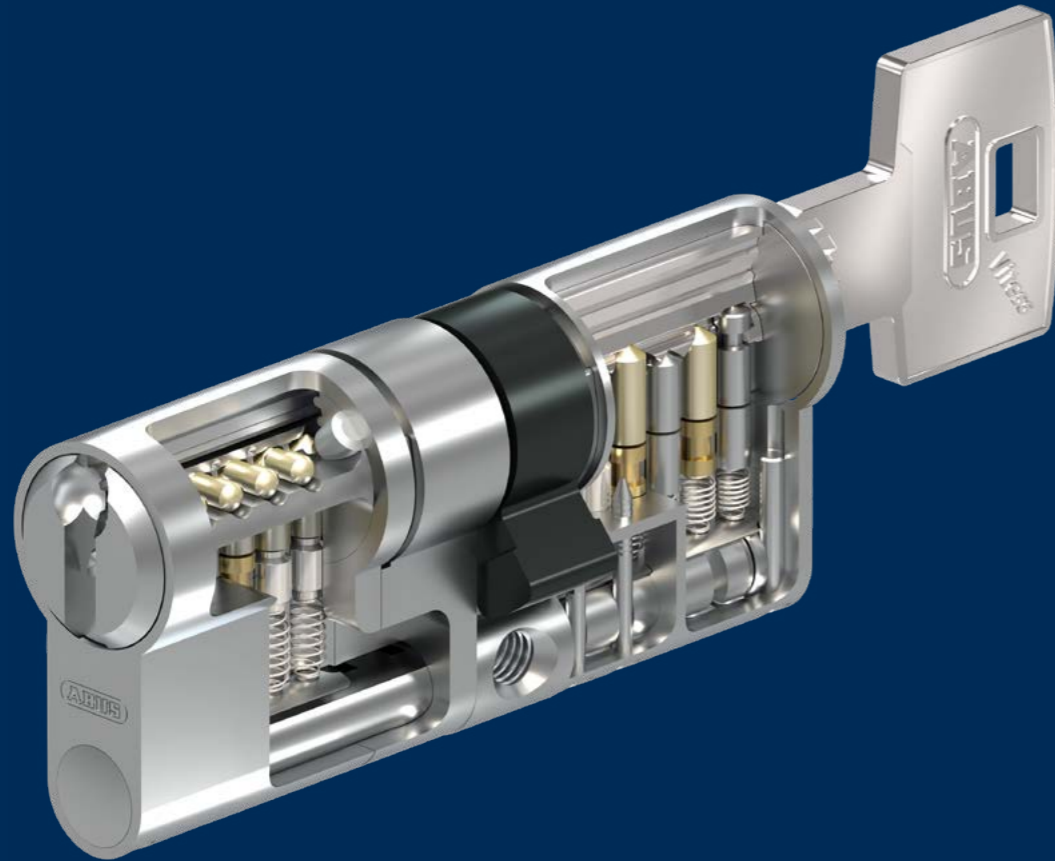
The high-quality, stable key is made from low-wear nickel silver to ensure long-term security. The unique shape makes the key extraordinarily stable.



The ViteSS locking system features the patented Intop system in both the cylinder and the key to provide effective protection against illegal key copies and manipulation of the lock cylinder.

# SECURITY, HARD AS STEEL

Vitess MX



## SECURITY, HARD AS STEEL

The stainless steel elements inside the Vitess MX cylinder provide iron clad security as standard. The stainless steel bar is the key component of the system and provides increased protection against breakage and extraction. The high-strength stainless steel anti-drill inlay and the hardened steel elements inside the cylinder offer increased protection against drilling.

## MAXIMUM FLEXIBILITY

Moving?  
Installing a new door?  
Making changes to your organisational structure?  
No problem! Modular cylinders allow you to adapt their lengths to suit your new door. So you can flexibly react to changes.



Anti-drill  
protection



Anti-shatter  
protection



Extraction  
protection

## MIX AND MATCH

For maximum security and flexibility, choose Vitess cylinders with modular MX technology. This allows modular cylinders to be combined with compact cylinders in one master key system, so the Vitess range can meet any requirement you have for your building.

# TECHNICAL DETAILS

Overview

System:	Vitess.2000
Key:	Stable, multiple paracentric key made from hard-wearing nickel silver
Key insertion:	Vertical
Patent protection:	✓
Trademark protection:	✓
Copy protection:	The Intop system provides technical copy protection by verifying locking authorisation both inside the cylinder and on the key
Locking rows:	2
Total locking elements:	Up to 10
Modular design:	Optional
Basic length:	30/30 mm and 28/32 mm for Euro profile double cylinders
Length increments:	Extensions available in 5 mm increments
Security card:	✓
Key related security:	Class 6 in accordance with DIN EN 1303, details available on request
Attack resistance:	Class B Class D if special features anti-drill and extraction protection "BZD"
Fire resistance:	Class B, T90
Product certification:	Certified to DIN 18252 and DIN EN 1303 standards Optional, for example SKG***, details available on request
Manufacturer certification:	ISO 9001
Production:	Made in Germany

**ABUS | Pfaffenhain**  
**www.abus.com**

---

Fabrikstraße 1  
09387 Jahnsdorf  
Germany  
+49 37296 713-0  
vertrieb@abus-pfaffenhain.de

Technical and colour specifications subject to change without prior notice.  
We assume no liability for mistakes and printing errors. © 2018

WRBF\_ENZL  
© 08/2018

Specialist dealer

