

# ABUS Industrial Safety

Safe Workplace, Protected Employees



---

## Safe Workplace, Protected Employees

---

Often taken for granted, safety on the job is one of the most important aspects of an ideal work environment. Not adhering to the proper procedures can cause life-altering accidents to happen within a matter of seconds.

Lockout/Tagout helps ensure a safe working environment. From the perspective of an employer, guidelines and legal regulations must be followed in order to protect employees. In this instance, where rules and directions alone are not enough, physical safety measures are needed to avoid work accidents.

This is where Lockout/Tagout products come into play. With these, machines, valves, power plugs and switches can be locked in a way that they cannot be accessed during maintenance, cleaning and repair work. Through these measures the safety of the employees is ensured and accidents can effectively be avoided.



---

# CONTENTS

---

ABUS Safety Lockout Devices	4-5
Lockout Hasp	6-7
Valve Lockout	8-9
Ball Valve Lockout	10-11
Ball Valve Lockout	12-13
Circuit Breaker Lockout	14-15
Multipolar Circuit Breaker Lockout	16-17
Power Plug Lockout	18-19
Gas Cylinder Lockout	20-21
Compressed Air Connection Lockout	22-23
Safelex™ Universal-Cable Lockout	24-25
Standard-Cable Lockout	26-27
Safety Redbox™ Group Lockout Box	28-29
ABUS Safety Padlocks	30-31
74 THE SAFETY LOCK	32-33
72 TITANIUM™ COLOR	34-35
41 HIGH SECURITY	36-37
T84MB SAFETY FIRST	38-39
T65AL myLOCK	40-41
ABUS	42-43

---

## ABUS Safety Lockout Devices Clearly visible during Maintenance

---

### Preventive Security to Protect Your Employees

Only a moment of carelessness, being inattentive for a second – and it has happened. Work accidents don't happen on purpose and usually it is not the fault of one individual. But the results of such careless moments can be serious. Each year, around 670 people die from work accidents and over one million employees get (seriously) injured.

Especially in industrial environments where workers come in contact with toxic chemicals, high temperatures, heavy machinery or sharp tools, the risk of an accident is extremely high. An oven fire can escalate very quickly, explosive materials can catch fire, rubble can fall down, and workers can get caught in machines. It is often difficult to help in such situations – and often help comes too late.

That's why it is not only important to establish clear guidelines for emergency situations, it is crucial to take preventive work safety measurements. Even with simple actions and safety products which can be integrated into the daily work routine without a problem, accidents can effectively be prevented and employees can be protected.



### Safety Regulations in the USA

In the USA, Lockout/Tagout is strongly connected to a federal agency named Occupational Safety and Health Administration (OSHA). According to OSHA, which is significantly responsible for work safety measurements, Lockout/Tagout is the best way to prevent work accidents during maintenance and service work.

### Wide Product Portfolio for Lockout/Tagout

ABUS offers a wide range of work safety products that fall under the Lockout/Tagout category. Lockout describes the actual physical action of locking, such as industrial machinery or gate valves, and can also be called maintenance protection. Tagout, on the other hand, refers to the marking of important lockout points with information or warning signs. A proper lockout procedure always requires a tagout. A tagout procedure can be carried out separately in cases where no physical lockout is possible.

ABUS offers a number of lockout devices for machinery, outlets, gate valves, ball valves, compressed air connections, etc. With special safety padlocks, the devices can then be locked. The availability of various colors, spaces for inscriptions, or even individual laser engravings fulfills the requirements for both a warning function and the possibility to assign certain locks to certain people. Detailed information on our products can be found on the following pages.





# Lockout Hasp

To temporarily block access to switchboards, ABUS offers different varieties of lockout hasps. With these, main power switches and thus the energy sources can easily be locked out during maintenance or service work. This is an easy and effective way to avoid accidental restarting of the machine.

## Areas of Application

- Lock out power switches during maintenance
- Ideal for lockout applications where more than one safety padlock has to be attached

## Details

- Holds up to 6 padlocks
- Available with or without pry-resistant interlocking tabs for added security
- High-quality materials for different areas of application

## Additional Value

Up to 6 padlocks can be attached to these safety hasps. If, for example, different work steps have to be carried out by different workers on a machine, they can each lock out the machine with their respective padlock. Only when maintenance is fully complete, the last worker takes off his or her padlock and releases the main switch.







## Valve Lockout

The regular maintenance of machinery is indispensable. In order not to endanger employees who are assigned to carry out the maintenance work, it is very important to lock out gate valves. The ABUS valve lockout device is perfect for this job. It effectively blocks access to valves on pipes so that these cannot be turned on accidentally.

### Areas of Application

- Block access to gate valves during maintenance

### Details

- High-quality polypropylene: long-lasting, robust and non-conductive
- Five sizes: Valves from 1" to 13"
- Holds 1 padlock with up to 23/64" shackle diameter
- Unique, predetermined breaking point at the top for valves with thread
- Stickers in various languages included

### Additional Value

The valve lockout is available in different sizes and can therefore be used on many different kinds of valves. Due to the predetermined breaking point on the top of the device, an additional opening can be created that allows for the lockout device to be used on valves with a thread.





# Ball Valve Lockout

To block most common ball valves (even those with more than two outgoing pipes), the ball valve lockout device is the right choice. If the flat lever is at an angle of 90° to the pipe, it can be locked by the device. With a padlock, the device ultimately gets fixated and the ball valve is locked. Accidental opening during maintenance work is therefore impossible.

## Areas of Application

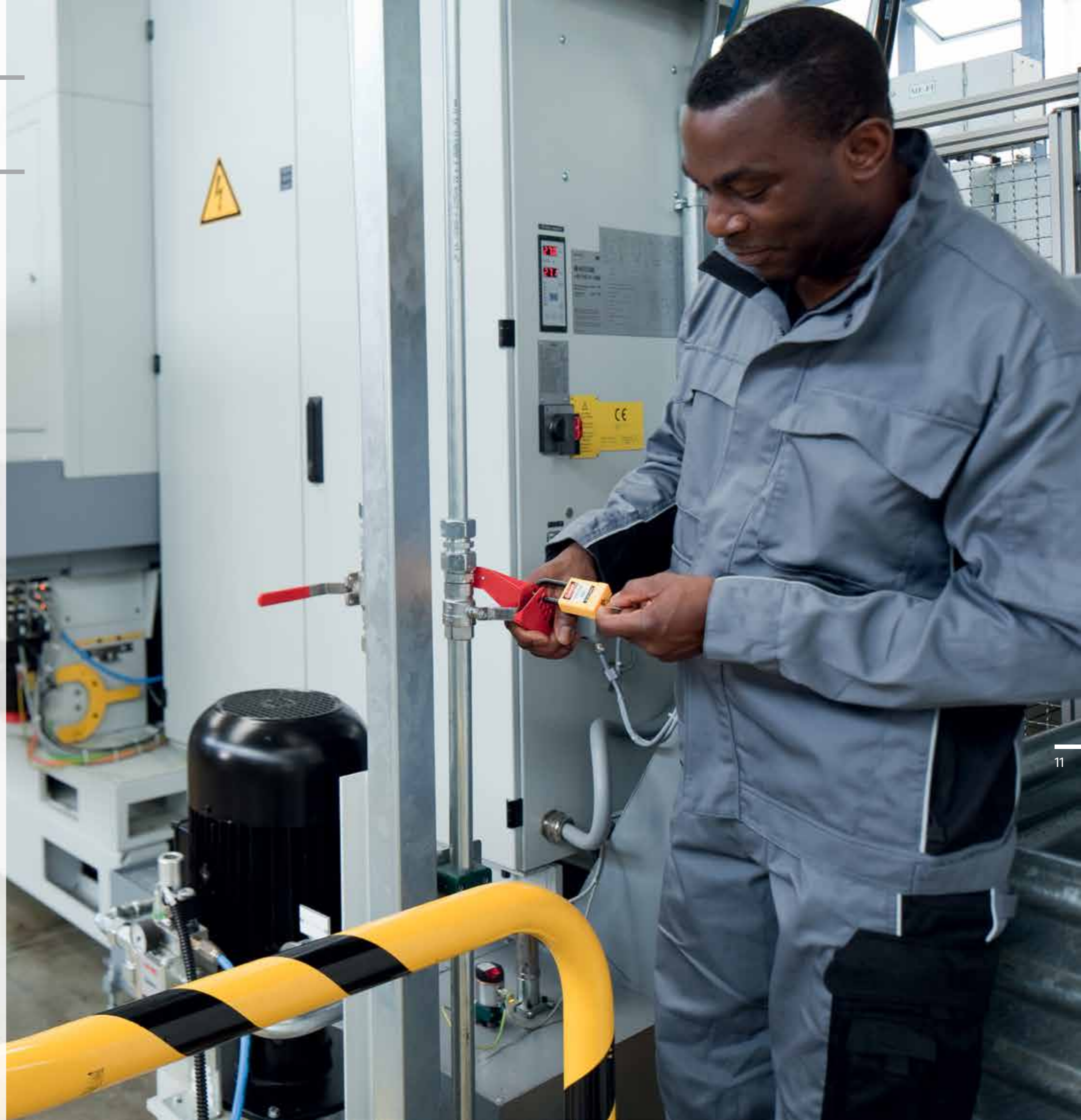
- Block access to ball valves during maintenance

## Details

- Stable and secure, made from powder-coated steel
- Two sizes for most common ball valves
- A number of holes for exact positioning of the padlock gives more stability
- Best used on hard-to-reach pipes

## Additional Value

The ball valve lockout device can be used universally and is also applicable for pipes that are hard to reach. The handling is practical and easy, since padlocks can be exactly positioned in one of the many holes of the device.







# Ball Valve Lockout

During maintenance work, certain valves on machinery have to be locked in order to protect employees. This ball valve lockout device is used to block access to a lever on a standard ball valve.

## Areas of Application

- Block access to ball valves during maintenance

## Details

- High-quality polypropylene; long-lasting, robust and non-conductive
- Two sizes: Handles for ball valves from 1/2" to 8"
- Well-positioned padlock holes for better grip on the valve
- Holds up to 6 padlocks

## Additional Value

This ball valve lockout device stands out not only due to its low weight, it convinces mainly by the exact fit around the valve. The four arms of the lockout device make for an optimal reinforcement and easily grip even large levers. Padlocks can be exactly positioned due to the many holes on the device.







## Circuit Breaker Lockout

Single circuit breakers can effectively be locked out by these devices. By turning the screw, the lockout device pinches single switches and blocks them from movement. During maintenance work, this procedure makes sure that switches and therefore the machines are not accidentally turned on.

### Areas of Application

- Block access to single-pole circuit breakers during maintenance

### Details

- High-quality materials: long-lasting, robust and non-conductive
- Easy-to-use with screwing mechanism for secure fixation
- Can be used universally on common single-pole circuit breakers
- With adapter for blade-type electric fuses
- Holds 1 padlock

### Additional Value

The non-conductive circuit breaker lockout can be used universally on any standard single-pole circuit breaker. Thanks to the additional adapter, the lockout device can also be used on blade-type electric fuses.





# Multipolar Circuit Breaker Lockout

This lockout device is used to keep multi-pole circuit breakers turned off during maintenance work. To do this, the lockout device is clamped into the open space under the bridge over the switches; then the adjustment wheel grips the device and therefore blocks the switch off.

## Areas of Application

- Block access to multi-pole circuit breakers during maintenance

## Details

- High-quality materials: long-lasting, robust and non-conductive
- Easy-to-use with screwing mechanism for secure fixation
- Holds up to 2 padlocks with a shackle diameter up to 9/32"

## Additional Value

The non-conductive circuit breaker lockout can be used to lock out multi-pole circuit breakers. Up to two padlocks can be attached simultaneously.







## Power Plug Lockout

In order to carry out maintenance work on machinery, some plugs have to be disconnected to interrupt the power flow. To make sure these plugs are not plugged in again by mistake, they can be locked inside this lockout device. The power plug lockout is available in two different sizes.

### Areas of Application

- Block access to power plugs during maintenance

### Details

- High-quality polypropylene: long-lasting, robust and non-conductive
- 2 Sizes: For standard plugs or high-voltage plugs
- Cable tunnel on both sides to secure plug connections
- Warning stickers in different languages included
- Holds up to 4 padlocks with a shackle diameter up to 23/64"

### Additional Value

With this lockout device, power plugs are visibly locked, making connection to a power outlet impossible. A warning sticker on the product makes the lockout even clearer. This way, maintenance work can safely be carried out. The large lockout device can also be used for the protection of plug connections – in case a certain power flow must not be interrupted during maintenance.





## Gas Cylinder Lockout

During maintenance work, gas bottles and gas connections have to be secured. The gas cylinder lockout is perfect for this job because it effectively locks gas cylinders.

### Areas of Application

- Block access to gas bottles and connections during maintenance

### Details

- High-quality polypropylene: long-lasting, robust and non-conductive
- Warning sticker included
- Holds 1 padlock with up to 23/64" shackle diameter

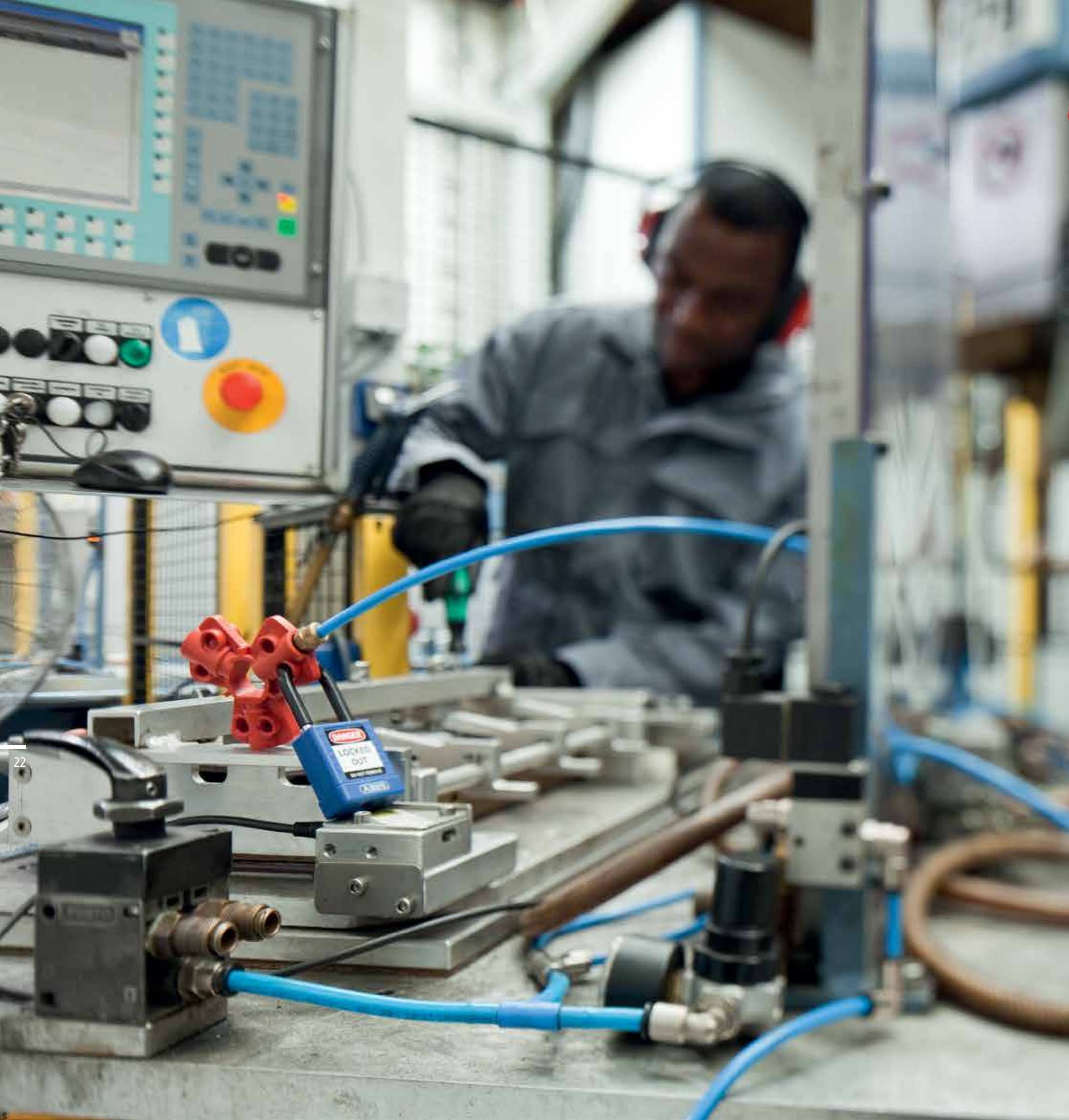
### Additional Value

Gas bottles can be locked out directly at the cylinder with this lockout device. This prevents leaking of gas and employees are protected during maintenance work. A sticker can be attached to the device which points out the lockout procedure very clear.



508





## Compressed Air Connection Lockout

In order to prevent compressed air from getting into the machine and therefore turning it on, some compressed air hoses have to be plugged out and locked. The compressed air connection lockout is perfect for this job.

### Areas of Application

- Block access to compressed air connections during maintenance

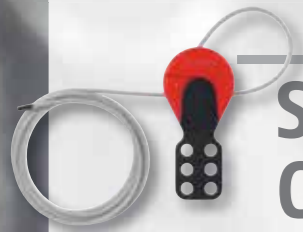
### Details

- Fiber-glass reinforced nylon: long-lasting, robust and non-conductive
- 3 different connections for most common compressed air couplings with 19/32" outside diameter
- The hole in the middle can be used to attach and store the lockout device directly at the connection
- Holds 1 padlock with 1/4" and 1 padlock with 9/32" shackle diameter per connection

### Additional Value

The compressed air connection lockout has three different connections in different diameters so that it can be used universally on all standard compressed air connections. In addition, each connection has two holes for padlocks so that locks with different shackle diameters can be used.





# Safelex™ Universal-Cable Lockout

There are situations when the right lockout device is not at hand. If a machine is malfunctioning and has to be serviced quickly, sometimes there is not enough time to search for a special valve, circuit breaker, or other device. The Safelex™ universal cable lockout is the solution. It is universally applicable, especially in cases where longer distances between two lockout points have to be bridged.

## Areas of Application

- Universal lockout device for locking out different energy sources during maintenance

## Details

- Intuitive design for self-explanatory application
- Patented grip mechanism for secure fixation of the cable
- Retightening possible at any time, even when locked
- Isolated, exchangeable metal cable in different lengths
- Holds up to 6 padlocks

## Additional Value

Thanks to the flexible cable which is available in four different lengths, the high-quality Safelex™ can be used universally for the lockout of various energy sources. The handling is easy and intuitive because the device is used just like our standard safety hasp with space for up to 6 padlocks. The cable gets clamped inside the body of the Safelex™, a completely secure and fast way of fixing.







## Standard-Cable Lockout

The standard cable lockout is used during maintenance work in cases where the special lockout device for the respective access point is not at hand. It can be used universally on different kinds of energy sources.

### Areas of Application

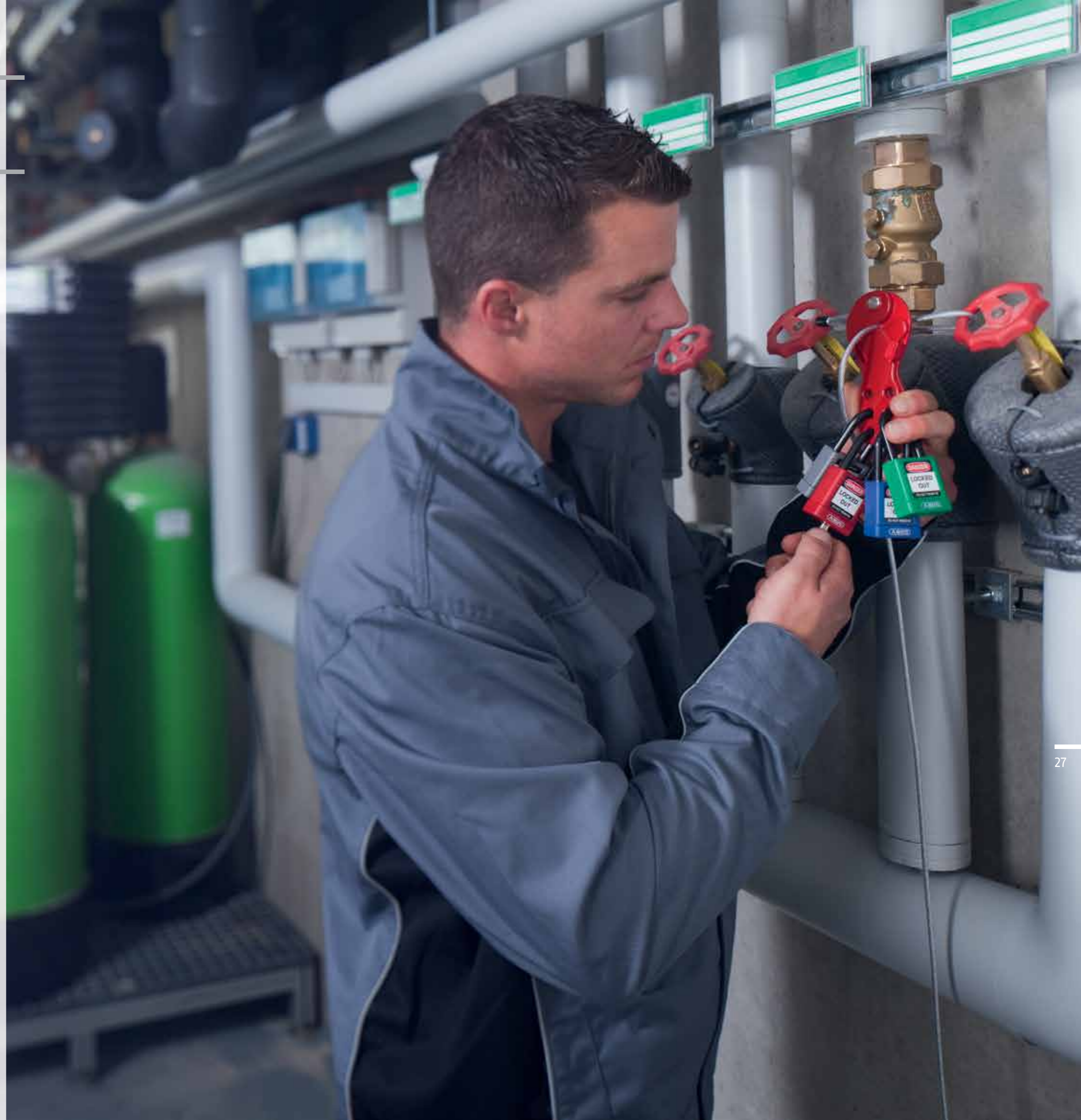
- Universal lockout device for locking out different energy sources during maintenance

### Details

- Intuitive design for self-explanatory application
- Isolated, exchangeable metal cable in different lengths
- Holds up to 6 padlocks

### Additional Value

The use of this cable lockout is easy and intuitive: The cable simply gets wrapped around the lockout spots and tightened with the lockout device. Just like a standard safety hasp, it can be locked with up to 6 padlocks. The flexible cable is available in different lengths and it allows for this lockout device to be used universally.







# Safety Redbox™ Group Lockout Box

Maintenance or service work on big machinery is usually an organizational effort. Many different access points have to be locked out, many different groups of workers with different professions are at work. If all people involved had to lock out each access point, it would become not only a very timely effort, but it would also require a large number of padlocks.

The solution: The Safety Redbox™. Thanks to this product, only the foreman has to lock out all the access points and then put the different keys into the box. All other people involved lock the Safety Redbox™ with their personalized padlock, thus all the keys are stored away until the end of the maintenance process.

## Areas of Application

- Lockout of large machinery or plants with many different access points and maintenance being carried out by a big number of people

## Details

- High level of stability in spite of low weight
- Ergonomic and space-saving fold-away handle
- Inside is exposed to light from all sides for better visibility of contents
- Lid features innovative and secure locking mechanism
- Patented wall bracket, also facilitates storing of padlocks

## Additional Value

The Safety Redbox™ convinces through its handiness. Due to its low weight, it can easily be carried around. In addition, the Safety Redbox™ comes with a wall bracket; the hinges that hold the box in place are on the back. This way it can also be used stationary and each machine can be assigned a single box. Employees will have no difficulties finding the right box for the right machine.

## TIP:

**Purchase this starter kit for a quick entry into safety lockout:**

- Safety Redbox™ group lockout box
- 18 pieces 74/40 padlocks (keyed different, 3 of each of the following colors: red, yellow, green, blue, orange, black)
- 4 pieces safety hasps (701)





# ABUS Safety Padlocks Maintenance Made Safe

## Safety Padlocks

Each working environment has its own unique characteristics and the framework for safety measurements usually differs. Sometimes corrosion resistance is very important, other times a spark-resistant or non-conductive feature is needed.

ABUS not only offers safety lockout devices, but also a large variety of color-coded, inscribable or engravable safety padlocks. Through these customization processes, a fast and easy assignment between the lock and the respective employee who uses that lock is always possible.

ABUS safety padlocks are not only quality-engineered; they are backed by high-quality service and support. For example, keyed alike locks can be reordered even after many years, or padlocks can be integrated in already existing locking systems.

## Locking Systems

The more machines there are that have to be locked out, the more different keys are needed. But a large number of keys and a confusing key administration are not necessary. Modern locking systems by ABUS are the solution.

A locking system is a combination of different locking cylinders that have a certain relation to each other. Depending on what is needed, the functionalities of the cylinder can be bundled and exactly assigned. Within a locking system there are single keys, group keys and general keys – this makes it possible to distribute certain access rights among different employees.



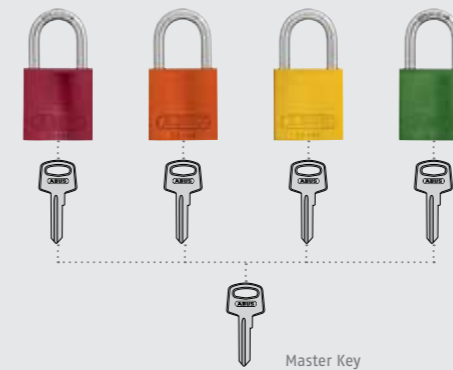
### Keyed Different:

Each padlock has its own unique key.



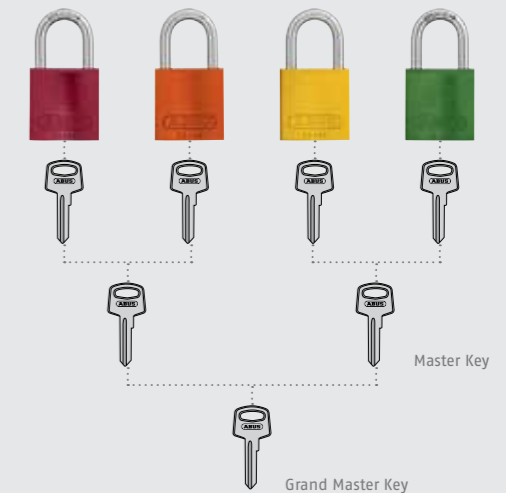
### Keyed Alike:

Each padlock can be opened with the same key.



### Keyed Different with Master Key:

Each padlock has its own key. The master key can open all padlocks.

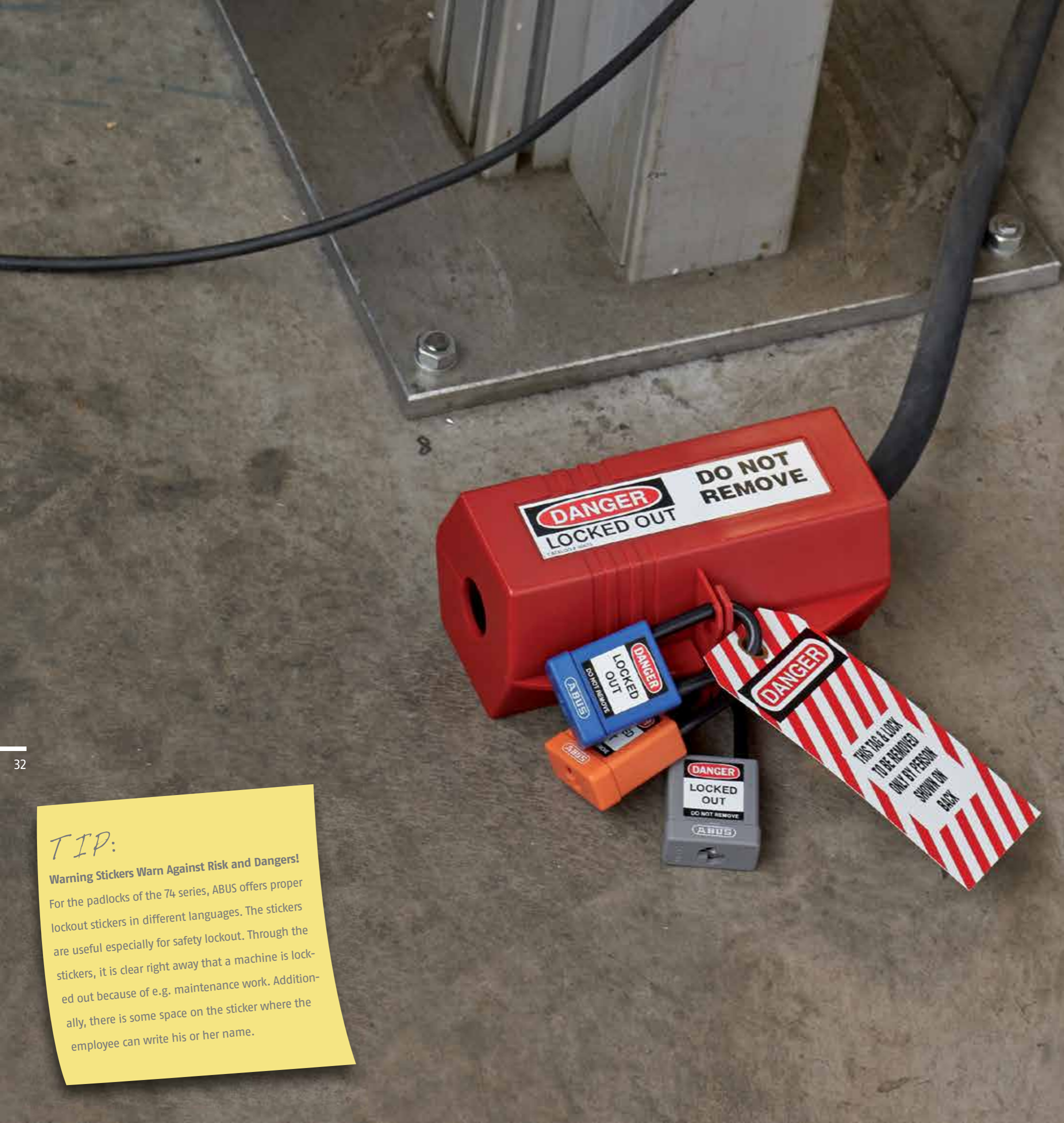


### Keyed Different with Grand Master Key:

Each padlock has its own key. The padlocks of each group can be opened with their respective master key. All padlocks can be opened with the grand master key.







### TIP:

**Warning Stickers Warn Against Risk and Dangers!**  
For the padlocks of the 74 series, ABUS offers proper lockout stickers in different languages. The stickers are useful especially for safety lockout. Through the stickers, it is clear right away that a machine is locked out because of e.g. maintenance work. Additionally, there is some space on the sticker where the employee can write his or her name.



## 74 THE SAFETY LOCK

For safety reasons, only a few employees are allowed to operate and lock out switchboards and machinery. With colored padlocks it is clear who has this authority. These regulations also apply in electrical and high-temperature surroundings: Use 74 series locks there.

### Areas of Application

- Machines, switchboards

### Details

- Non-conductive and extremely heat-resistant – Useable also in hot and electric environments
- Lightweight aluminum body
- Plastic cover around the lock body and shackle
- Available in 8 different colors – Assignment and differentiation according to department or user, protects sensitive surfaces from scratches
- Ideal shackle height for use in conjunction with safety hasps
- High-precision 6-pin cylinder with paracentric profile – high level of protection against attacks, e.g. picking
- Key-retaining feature – key can only be removed from the padlock when it is fully closed
- Padlocks of the series 72 and 74 can be made keyed alike

### Additional Value

The padlocks of the 74 series contribute effectively to work safety. They are non-conductive and heat-resistant and therefore can be used without concerns on machinery and switchboards during maintenance.







# 72 TITALIUM™ COLOR

Work safety is a high priority subject. With the locks of the 72 series, the safety of the employees can be significantly improved. Due to their color variety, the locks can be assigned to different persons or groups. Through this, it is clear who is locking out a machine and who has the responsibility to unlock it.

### Areas of Application

- Doors, gates
- Sheds, cellars
- Tool boxes
- Machines, switchboards

### Details

- Lightweight aluminum body
- Anodized lock body in 9 different colors – assignment and differentiation according to department or user
- Shackle made from hardened steel with NANO PROTECT™ coating for a high level of corrosion resistance – high security against attacks even under harsh weather conditions
- Ideal shackle height for use in conjunction with safety hasps
- High-precision 6-pin cylinder with paracentric profile – high level of protection against manipulation, e.g. picking
- Two keys included
- Padlocks of the series 72 and 74 can be made keyed alike

### Additional Value

The 72 series lock is the ideal padlock for safety lockout. It is secure, light and can clearly be assigned due to its many different colors.



*TIP:*

### Personalize Your Padlock!

Laser engraving is ideal for personalizing locks and therefore facilitates fast and easy assignment. With laser engraving, ABUS offers the perfect possibility to individualize your padlocks according to your needs.







# 41 HIGH SECURITY

The ABUS 41 Laminated Steel Series is a safety padlock that also features a high level of security. The robust steel body is not only resistant to physical attacks, but also to corrosion because of the special ETERNA™ plating on each of the laminates.

## Areas of Application

- Doors, gates
- Sheds, cellars
- Lockers
- Tool Boxes

## Details

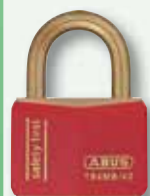
- Laminated steel lock body
- The laminates are individually coated with our special ETERNA™ plating which guarantees a high level of corrosion resistance
- Tough, countersunk rivets
- The shackle is made of hardened steel
- The high-precision 5-pin tumbler is drilling- and pulling-resistant
- The vinyl bumpers in 9 different colors enable easy identification of the user or department

## Additional Value

The locks of the 41 laminated steel series are highly rust-resistant and can therefore be used outside or in other corrosive environments. The laminates of the lock are coated individually before assembly which makes the lock secure even when moisture gets to the inside.







## T84MB SAFETY FIRST

The T84MB is spark-resistant and very sturdy in harsh weather conditions. For safety purposes, it is best used wherever corrosion is an issue.

### Areas of Application

- Machines, switchboards
- Job boxes, lockers
- Bags, suitcases

### Details

- Lock body and shackle made from solid brass
- Double-bolted (Size /30 and larger)
- Inner parts made from non-corrosive materials
- High-precision 4-pin cylinder with paracentric profile – high level of protection against manipulation, e.g. picking
- Automatic locking: Locking without key by pressing down the shackle
- Protective plastic casing available in 6 colors

### Additional Value

The T84MB is ideal for use in explosive environments and in harsh weather conditions, e.g. in proximity to lakes or harbors. It can be used outside without any concerns.







# T65AL myLOCK

The T65AL colored locks can easily be inscribed and can therefore be assigned to their respective users. No possibility of confusion!

## Areas of Application

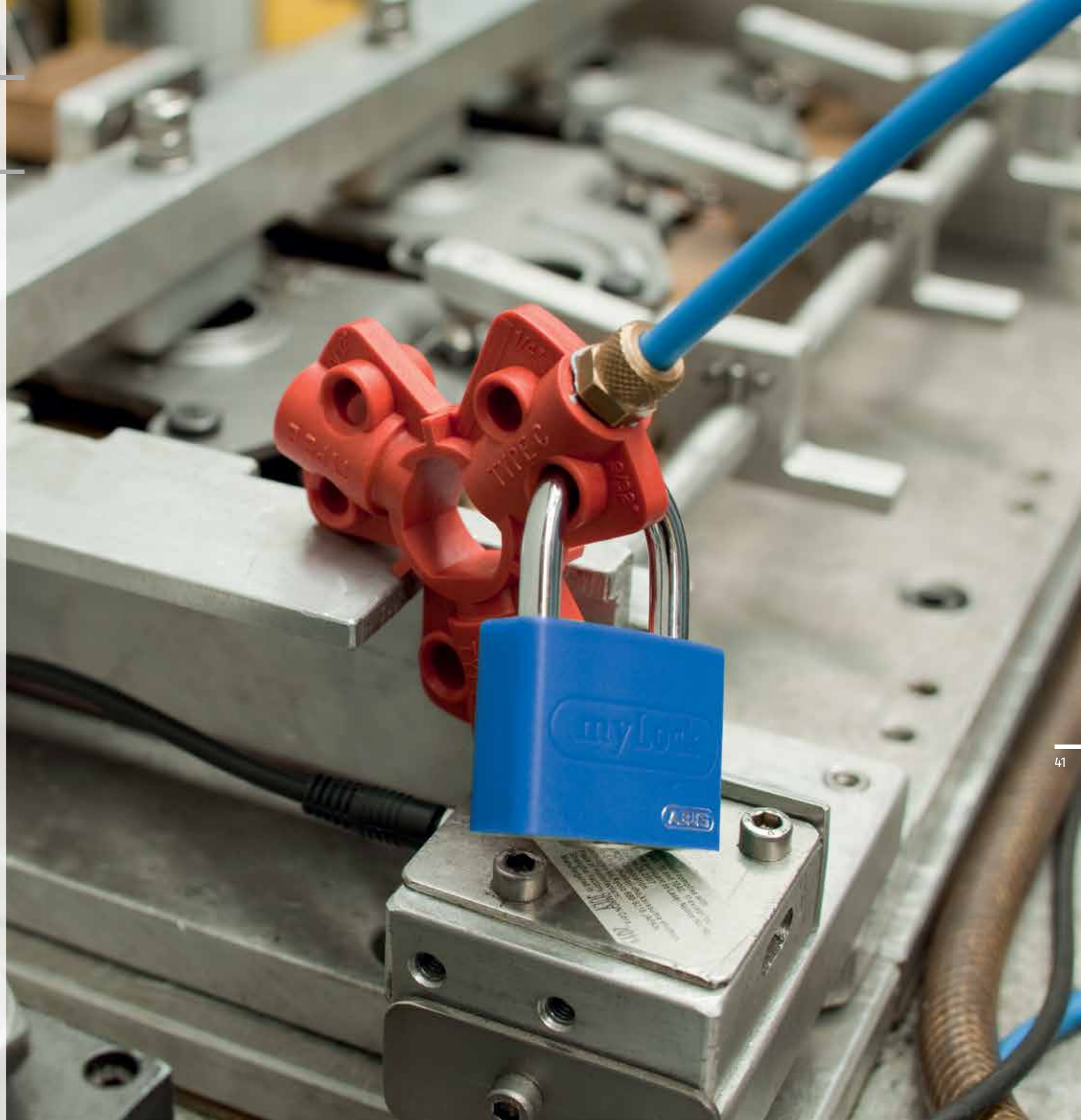
- Machines, switchboards
- Sheds
- Lockers
- Tool boxes

## Details

- Aluminum body – sturdy and very lightweight
- Hardened, double-bolted steel shackle – high level of protection against attacks like cutting or pulling
- Prevents scratches on sensitive surfaces thanks to its plastic cover
- Plastic cover can be inscribed with a permanent marker or can be furnished with a picture or logo
- Available in 6 different colors – for differentiation between users and departments

## Additional Value

The locks of the T65AL series distinguish themselves with their low weight. Thanks to the many different colors, the locks are ideal to be assigned to different users or departments. In addition, the plastic cover can be designed individually.





# ABUS

*"Do what you love to do."*

Based on this statement, August Bremicker took the chance to start his own business in the small town of Volmarstein in 1924. With the vision to create products that protect peoples' lives and their belongings, the production of the first padlocks started in the cellar of the family house. Today, a globally acting company group has emerged from the family enterprise.

Tireless efforts, richness of ideas, know-how in development, manufacturing and sales are the cornerstone of the success of the family business which today is led by the third and fourth generation.

The basis of ABUS's security competence lies in the comprehensiveness of their product offering for mechanical security from the basement to the roof. This program has already been expanded by the Recreational Security division which focuses on products for bikes, motorbikes, marine products, etc.

In 2001, the daughter company ABUS Security-Center with their competence in electronic security products was integrated into the ABUS group and offers a wide range of state-of-the-art alarm systems and intelligent video surveillance products.



„A B U S“



Being a well-known provider of high-quality locking systems in the real estate business, ABUS Pfaffenhain has represented a very important part of ABUS's core business since 2003. Reference projects like the Burj al Arab in Dubai or the Wembley stadium in London contribute to the very high level of recognition for the company.

The youngest member of the ABUS group that was acquired in 2010 is ABUS Seccor with the core competence lying in electronic access control.

Just like distances seem to get shorter and shorter in times of globalization and digitalization and networking comes more into focus, the route ABUS has taken follows the same direction. For the different companies of the ABUS group, this means to grow closer and closer together – just like in a real family. With security solutions that are more and more interconnected, we react to the rising expectations of our customers. Our main focus is the brand quality of ABUS. That means for ABUS:

To work in a team as a worldwide brand manufacturer and to set the same benchmarks no matter where in the world we operate.





Security Tech Germany

## Contact:

**ABUS** | August Bremicker Söhne KG

Altenhofer Weg 25

58300 Wetter

Phone: +49 2335 - 634 0

Fax: +49 2335 - 634 259

Email: [info@abus.de](mailto:info@abus.de)

Internet: [www.abus.com](http://www.abus.com)

