



HELMETS | LOCKS
**MTB
PROTECTION**



OFF



A Sport that Demands-Mountain biking is constantly progressing and riders are pushing their personal limits as well as the limits of their gear. At ABUS we design and manufacture helmets to match all riding styles, from freeriding to casual rides in the woods.





THE ROAD





DRIVEN BY PROFESSIONALS

We love what we do, just like the freeride legends and up-and-coming riders we have partnered with to develop our mountain bike helmets.



**MAX
SCHUMANN**

77
FEEL SAFE
WITHOUT FEELING
THE HELMET
ON MY HEAD.
THAT'S WHAT
DISTINGUISHES
THE MODROP
FOR ME!



**RICHIE
SCHLEY**





”
 THE MODROP FITS
 PERFECTLY. IT'S SUPER
 LIGHTWEIGHT,
 WELL VENTILATED,
 ALMOST LIKE
 I AM NOT WEARING
 A HELMET!

**STEFFI
 MARTH**



**GABRIEL
 WIBMER**

**CEDRIC
 GRACIA**



GRACIA





HELMET DEVELOPMENT

PASSION MEETS MTB-DNA

After our successes in road racing, mountain biking was the logical next step. To ensure we designed and developed the best helmets possible, we partnered with professional riders who know which features make the perfect MTB helmet.





Richie Schley,
MTB Legend,
MTB Hall of Fame
Member



MTB-HELMETS

HEAD PROTECTION

At ABUS, we know how tough mountain bikers are on their equipment. Our motivation is to make days in the back country or the local trail system as safe and enjoyable as possible. From the AirDrop to the MoTrip, from gnarly downhills to flowy single track, we offer the right helmet for every ride.



AIRDROP



AIRDROP MIPS QUIN



AIRDROP MIPS



AIRDROP MIPS QUIN



CLIFFHANGER



CLIFFHANGER QUIN



CLIFFHANGER



CLIFFHANGER MIPS



MOVENTOR



MOVENTOR 2.0 QUIN



MOVENTOR 2.0



MOVENTOR 2.0 MIPS





MODROP



MODROP QUIN



MOTRIP



MOTRIP

More information,
all models, colors
and features can
be found at
abus.com/MTB



MODROP



MOTRIP



MODROP MIPS



MOTRIP MIPS



BUTEO



BUTEO







AIRDROP

- Precise adjustment system to fit your head ensures maximum comfort
- Ambient Sound Channel provides better acoustics and improved spatial awareness
- QUIN Crash Sensor
- Double D-ring closure



concrete grey



black gold



polar white



velvet black

S | M (52–58 cm) / 790 g
L | XL (58–62 cm) / 890 g

More information,
colors and features at
abus.com/MTB





CLIFFHANGER

- Precise adjustment system for a secure and comfortable fit
- Helmet compatible with ponytails
- Laterally adjustable TriVider webbing for increased comfort
- Height-adjustable visor
- GogFit device
- QUIN Ready



midnight blue



concrete grey



iced mint



shiny white



velvet black

S (51–55 cm) / 360 g
M (54–58 cm) / 380 g
L (57–61 cm) / 410 g

More information,
colors and features at
abus.com/MTB



MOVENTOR 2.0

- Precise adjustment system for a secure and comfortable fit
- Helmet compatible with ponytails
- Laterally adjustable TriVider webbing for increased comfort
- Height-adjustable visor
- GogFit device
- QUIN Ready



pine green



concrete grey



iced mint



shiny white



velvet black

S (51–55 cm) / 360 g
M (54–58 cm) / 380 g
L (57–61 cm) / 410 g

More information,
colors and features at
abus.com/MTB

Join Steffi Marth and Max Schumann on a three-day mountain bike adventure through Tuscany.



MODROP

- Precise adjustment system for a secure and comfortable fit
- Helmet compatible with ponytails
- Height-adjustable visor
- Laterally adjustable TriVider webbing for increased comfort
- Insect protection
- GoggFit device
- QUIN Ready



iced mint



dusky camel



midnight blue



pine green



polar white

S (51–55 cm) / 310 g
M (54–58 cm) / 330 g
L (57–61 cm) / 360 g

More information,
colors and features at
abus.com/MTB



MOTRIP

- Precise adjustment system for a secure and comfortable fit
- Helmet compatible with ponytails
- Height-adjustable visor



shiny white



pine green



shiny black



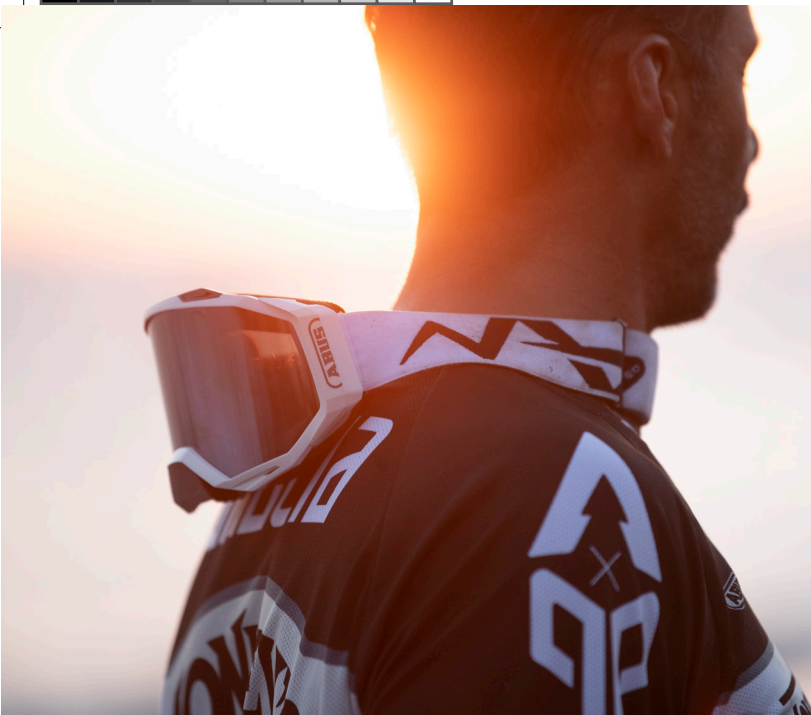
concrete grey



midnight blue

S (51–55 cm) / 230 g
M (54–58 cm) / 340 g
L (57–61 cm) / 350 g

More information,
colors and features at
abus.com/MTB



BUTEO

- Double-layer anti-fog glass
- Removable nose guard
- Clear, mirrored, or tinted replacement glass sold separately



velvet black



neon yellow



polar white



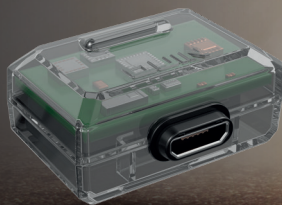
infra red

More information, colors and features at abus.com/MTB

ABUS QUIN-SYSTEM

CRASH DETECTION

The ABUS QUIN system is like having a private hands-free emergency call center in your helmet. Helmets outfitted with the ABUS QUIN system have an integrated accelerometer that detects and measures falls. In the event of a crash, the QUIN sensor, combined with the QUIN for ABUS app on your smart phone, will notify your previously defined emergency contact, sending them your location via SMS and email. This person can contact you and coordinate help if needed. Since not all emergencies involve a fall, the QUIN system can also be triggered manually in the event of a different danger or a mechanical – better safe than sorry.



The key component –
the QUIN chip

The QUIN for ABUS app and a smart phone are required to use the QUIN system. Registration is free. Additional app features are available for a fee and can be added or cancelled at any time.





LOCKS

BIKE PROTECTION

Locks for MTBers range from robust to lightweight, and are available with both key or combination options. For short mid-ride stops we recommend a lightweight security solution to protect your bike, helmet, and components. At home, we suggest the extra-strong combination of a WBA100 and CityChain to protect your MTB!



FOLDABLE LOCKS



BORDO™ 6000C COMBO

- Soft-touch coating
- Set your own combination code
- Incl. Saddlefix bracket and rain cover for mounting under the saddle
- Also available in an LED version

Locking type: Combination lock
Length: 90 cm
Weight: 1050 g



BORDO™ LITE 6055K

- Soft-touch coating
- Optimal balance of security and weight
- Bracket available to easily mount on the frame

Locking type: Key
Lengths: 85 cm / 60 cm
Weight: 500 g / 400 g



BORDO™ LITE 6055C COMBO

- Soft-touch coating
- Set your own combination code
- No key necessary
- Bracket available to easily mount on the frame

Locking type: Combination lock
Lengths: 85 cm / 60 cm
Weight: 550 g / 460 g



CABLE LOCKS



SPORTFLEX

- Lightweight, space-saving cable lock that mounts under a water bottle cage
- Ideal protection against opportunistic theft, as well as for protecting helmets and other accessories
- Set your own combination code

Locking type: Combination lock
 Length: 90 cm
 Weight: 200 g



COMBIFLEX

- Set your own combination code
- Pocket sized
- Ideal protection against opportunistic theft, as well as for protecting helmets and other accessories

Locking type: Combination lock
 Lengths: 120 cm / 85 cm / 65 cm
 Weight: 100 g / 80 g / 54 g

SPECIAL LOCKS



ALARMBOX RC

- Motion sensing alarm with flexible mounting
- Triggers alarm if continuous movement/vibration occurs
- Activation by remote control

Various mounting options
 Weight: 70 g



WALL-GROUND ANCHOR



Security Level
Motorbike

WBA100 GRANIT™

- 16 mm thick shackle for maximum resistance
- Enables bikes and motorcycles to be secured in garages, sheds, and houses
- In combination with an ABUS lock, this anchor offers maximum security

Shackle thickness: 16 mm

Weight: 1880 g

Further variants at [abus.com](https://www.abus.com)

CHAIN LOCKS



CITYCHAIN™ 1010

- 9 mm thick hexagonal chain
- Textile sleeve to protect against paint damage
- Automatic keyhole cover

Lengths: 170 cm / 140 cm /

110 cm / 85 cm

Weight: 1850 g / 2200 g /

2650 g / 3200 g





Find your nearest ABUS dealer
using the dealer locator on
abus.com

ABUS | August Bremicker Söhne KG
abus.com

Altenhofer Weg 25
58300 Wetter
Germany
+49 23 35 634-1270
mobile@abus.de

Technical and color specifications subject to change without prior notice.
We assume no liability for mistakes and printing errors. © ABUS 2022

